



LAYERZERO
POWER SYSTEMS, INC.

The Foundation Layer

Series 70 ePODs: Type-P

Static Transfer Switch → Transformer → Distribution

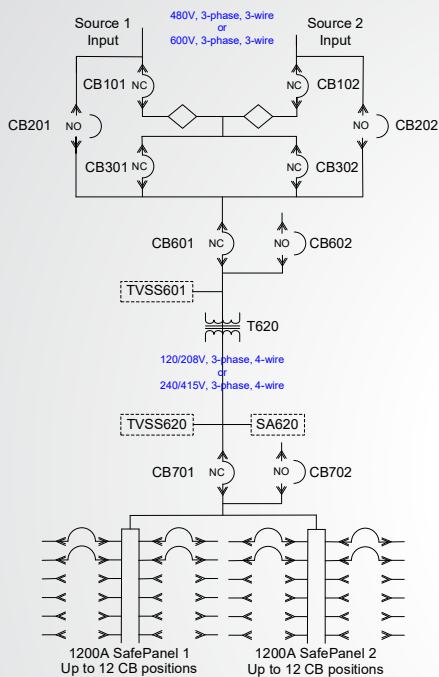


Product Brochure

The LayerZero ePODs: Type-P PDU Increases Operator Safety

ePODs: Type-P STS/PDU Combination Increases Reliability and Operator Safety

LayerZero Power Systems designed the Series 70 ePODs: Type-P to provide switching between multiple sources and finger-safe power distribution in an easy-to-deploy package. The ePODs: Type-P provides switching between two independent power sources on the primary side of the transformer, while providing power distribution capabilities, featuring a solid-state transfer switch on the primary side of the transformer. The Series 70 ePODs: Type-P provides the ability to transfer power between two or three sources in quarter of an electrical cycle, while delivering that power to up to twelve sub-feed circuit breakers or to branch circuit panel boards. The Finger-Safe SafePanel is IP-20, inspired by the recommendations of NFPA-70E. In addition, ePODs: Type-P includes Zen DPQM™, LayerZero’s Static Transfer Switch power quality monitoring system.



One Line Diagram



LayerZero's ePODs: Type-P Is Equipped Fully-Loaded

Reliability

- ☑ **Optional Triple Modular Redundancy:** TMR Contains Fully-Independent Control Paths With No Single Point-Of-Failure
- ☑ **Safe Bypass Procedure:** Mechanical Bypass Interlock Eliminates Human Error When Performing Bypass Procedures
- ☑ **Voice Guided Bypass:** Step-By-Step Instructions With Audio and Video Guidance To Assist Operators Through Bypass
- ☑ **Convection Cooling:** Natural Convection-Cooled Heat Dissipation System is Maintenance-Free
- ☑ **Epoxy Coated Buswork:** Maximizes Reliability By Eliminating The Possibility of Bus-To-Bus Faults
- ☑ **Silver Plated Terminals:** Silver Has Excellent Conductivity To Provide Superior Electrical Performance and Reliability
- ☑ **Maintenance-Free Joints:** Brazed Joints Are Permanent And Maintenance-Free, Maximizing Product Life
- ☑ **Machined Hardware:** Machined Cap Screws and Engineered Disc Springs Maintain Constant Torque Throughout Product Life
- ☑ **Screw Thread Inserts:** Prevents Screws From Loosening Under Vibration For Long-Term Reliability
- ☑ **Optical Fiber Based Controls:** Eliminates Noise and Interference While Isolating Components from High Voltage
- ☑ **Serialized Critical Board Tracking:** Critical Boards Are Serialized And Cataloged in an Active Database For Traceability
- ☑ **Transformer Vibration Isolation:** Vibro-Elastic Pads to Absorb Vibrations from the Transformer

Safety

- ☑ **InSight™ IR Portholes:** Bolted Connections & Critical Boards Can Be IR Scanned With the Dead-Front Doors Closed
- ☑ **Sectionalized Components:** Isolated Sections That Can Be Safely De-Energized For Performing Maintenance
- ☑ **Polycarbonate Windows:** Allows Critical Board LEDs To Be Viewed With The Dead-Front Door Closed
- ☑ **Front-Only Access:** Installation and Maintenance Can Be Safely Performed Without Side or Rear Access
- ☑ **Dead Front Hinged Doors:** Barrier To Provide A Safe Working Area With No Exposed Live Parts
- ☑ **SafePanel™ Distribution:** NFPA-70E Inspired Finger-Safe Panel Board With No Exposed Live Parts

Connectivity

- ☑ **Ethernet Connectivity:** Secure VPN Router Connects To Network For Advanced Remote Monitoring Capabilities
- ☑ **Modbus/TCP:** Open Connectivity to Existing Monitoring Systems Without Proprietary Limitations
- ☑ **NTP Time Clock Synchronization:** Facilitates Timeline-Based Logging For Post-Event Reconstruction
- ☑ **SNMP Connectivity:** Permits Remote Management Via Simple Network Management Protocol



- ☑ **Real-Time Waveform Capture:** Automatically Captures A Picture Of The Power Three-Cycles Before and After Every Event
- ☑ **Local Touch-Screen Interface:** Password-Protected Color Touch-Screen GUI For Local STS Setup/Operation/Administration
- ☑ **Black-Box Forensics:** eSTS Captures and Records All Events To Provide Vital Information In Root-Cause Analysis
- ☑ **Waveforms Automatically Emailed:** Capability to Send Waveform Captures To Designated Individuals For Every Transfer

Equipment Layout

eSTS:

Size: 250 A, 400 A, 600 A, 800 A
 Voltage: 480 V, 3-W; 600 V, 3-W
 Redundancy:

- Triple Modular Redundant (TMR)
- Single Module Redundant (SMR)
- Output Switch: Redundant,
- Non-redundant

Main Circuit Breaker Section:

MCB optional
 Mounting: Fixed, Plug-In
 Type:

- Molded Case Switch
 65kA, 100kA
- Electronic Trip
 65kAIC, 100kAIC

Accessories:

- CB Shunt-trip
 120VAC, 24VDC

CB Position Indication:

- Open, Tripped, Closed

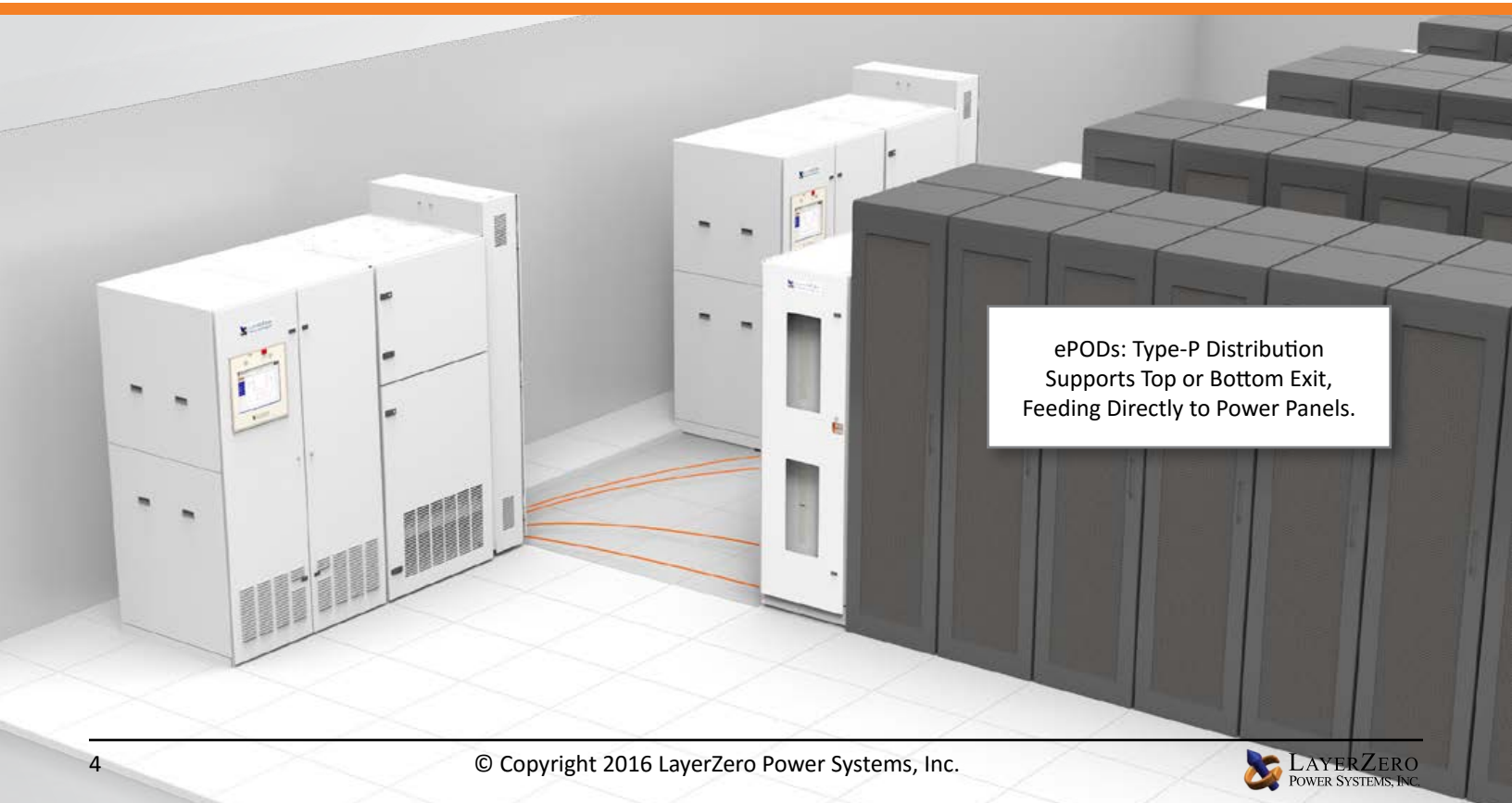
Transformer section:

Size: 150kVA; 225kVA; 300kVA; 400kVA; 500kVA
 Type: Normal Efficiency, TP-1 high efficiency
 Inrush: Low-inrush

Non-linear thermal rating:
 K-9, K-13, K-20

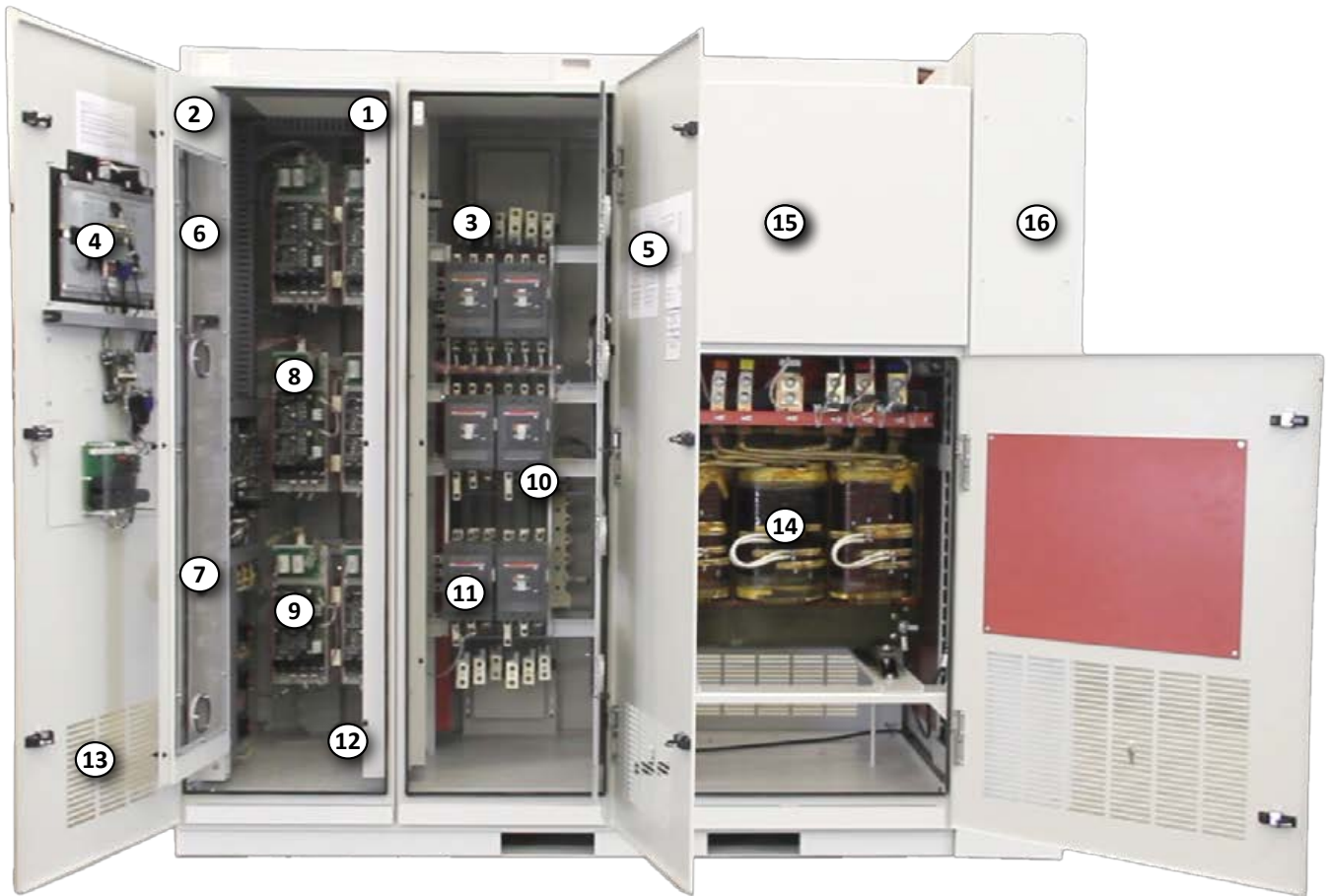
Distribution Section:

Sub-feed distribution
 • 1200 A SafePanel
 Up to six (6) 42-circuit, 225A or 400A panel boards

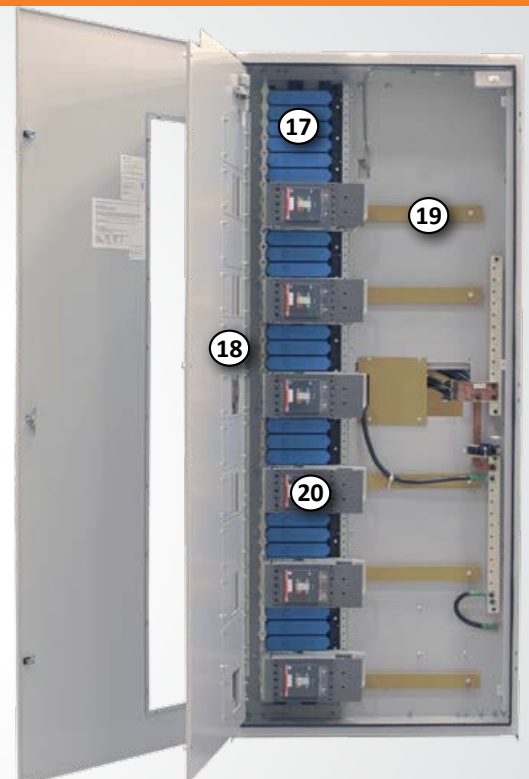


ePODs: Type-P Distribution
 Supports Top or Bottom Exit,
 Feeding Directly to Power Panels.

Equipment Construction Detail



- | | |
|---------------------------------------|---------------------------------------|
| 1. Alarmed Doors | 15. Transformer Circuit Breaker |
| 2. Hinged Dead Front Doors | 16. SafePanel™ |
| 3. Silver Plated Terminals | 17. SafePanel™ Shrouds |
| 4. 15" Color Touch Screen GUI | 18. Universal Dead Front Door |
| 5. Printed Bypass Instructions | 19. Cable Organization Clips |
| 6. Polycarbonate Window | 20. Up to 12 Subfeed Circuit Breakers |
| 7. InSight™ IR Portholes | |
| 8. Convection Cooled Heat Sinks | |
| 9. Staggered Gate Drive Arrangement | |
| 10. Epoxy Coated Buswork | |
| 11. Circuit Breakers | |
| 12. Redundant Power Supplies | |
| 13. Louvered Convection Cooled Intake | |
| 14. Transformer | |



Distribution Configuration Options

Highly Configurable Distribution

The Series 70 ePODs: Type-P is available in a wide variety of configurations. ePODs: Type-P is equipped standard with a Static Transfer Switch, Transformer, and Distribution in an easy-to-deploy package. Distribution options include up to four 42-circuit branch circuit breakers (168 total), and subfeeds.

Optional configurations include:

- Front-Only Distribution
- Front + 1-Side Distribution
- Front, Left, and Right

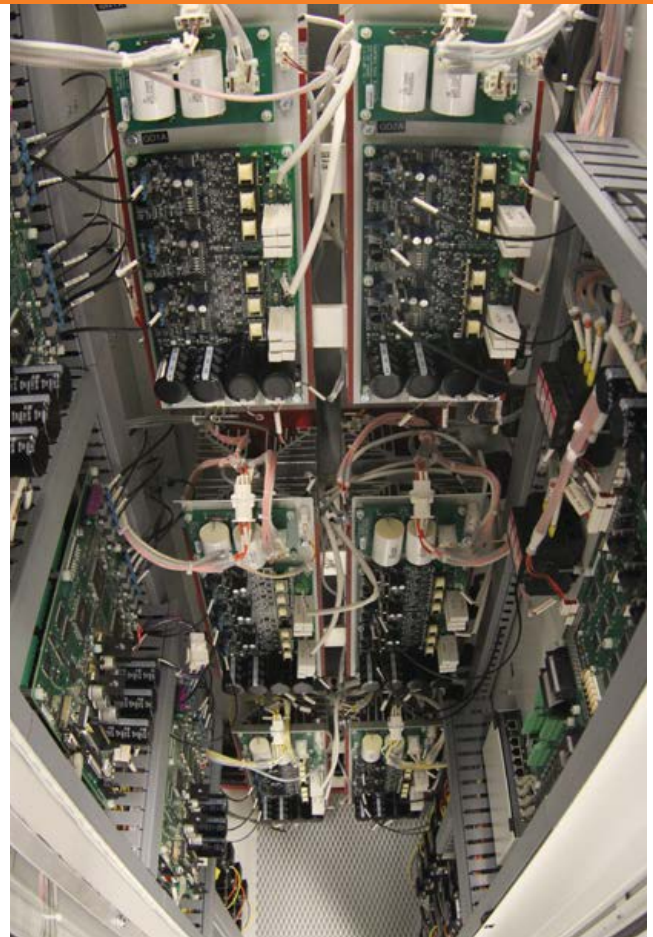


Reliability Overview

LayerZero ePODs: Type-P Reliability Overview

The LayerZero ePODs: Type-P Provides Many Dimensions of Reliability:

- Control System Reliability
 - SMR (Single Module Redundancy, Standard)
 - TMR (Triple Modular Redundancy, Optional)
- Control Power Supply Reliability
- Signal Reliability
- Operator Procedural Reliability

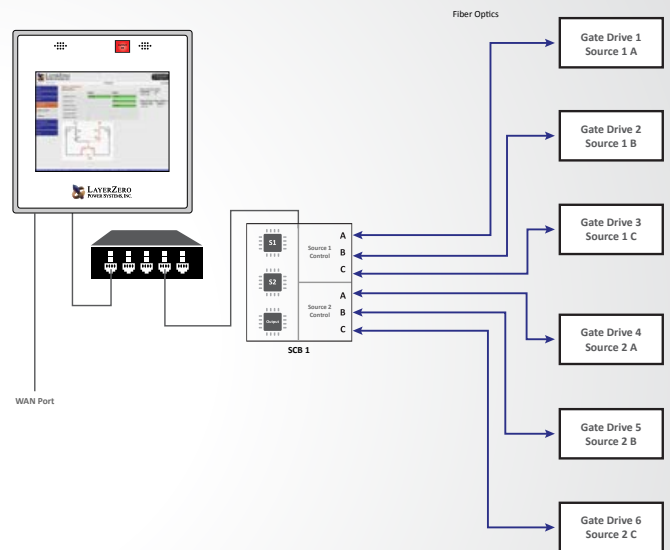


Single Module Redundancy (SMR) Reliability (Standard)

Single Module Redundancy is a cost-effective topology that provides redundant power paths to mission-critical equipment. In SMR systems, sources each have built-in triple redundancy of processors.

In addition, every phase is controlled with a separate gate drive board.

LayerZero Single Modular Redundant topology is unique that it the system is fail-safe, maintaining full switching functionality even if a critical board were to fail.



Reliability Features: Triple Modular Redundancy (TMR) *Optional

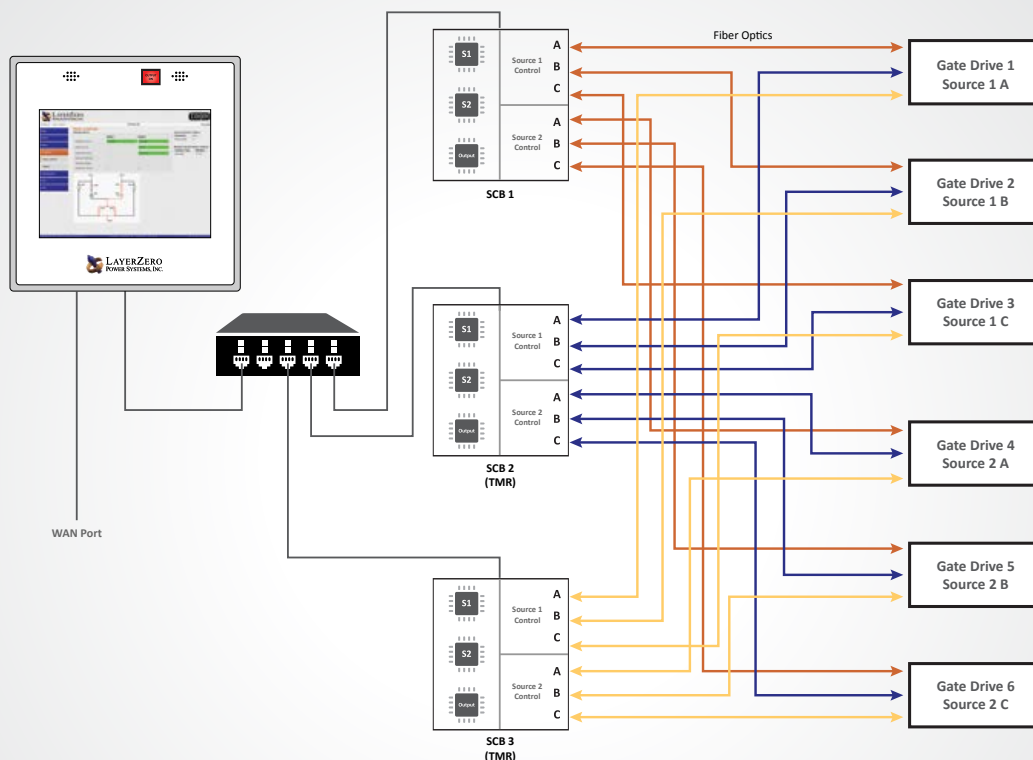
eSTS TMR Triple Redundant Power Supply Architecture Has All Redundancy Features of SMR Architecture, Plus:

Each STS has three independent sets of analog and digital data acquisition and control systems. There is no direct communication between the three systems. The three systems do not even share a common system clock.

- Each control system acquires voltage and current data independently
- Each control system determines whether a source is good/bad independently
- Upon loss of a source, each control system makes decisions to transfer independently

Each SCR pair is driven by three separate actuators (gate drives)

Even if an entire control path or its subcomponent were to fail; and then if the active power source were to fail, the STS is designed to meet its emergency transfer specifications. It is able to complete its mission of transferring to the alternate source.



Reliability Features: Single Module Redundant (SMR) Redundancy

eSTS SMR Triple Redundant Power Supply Architecture

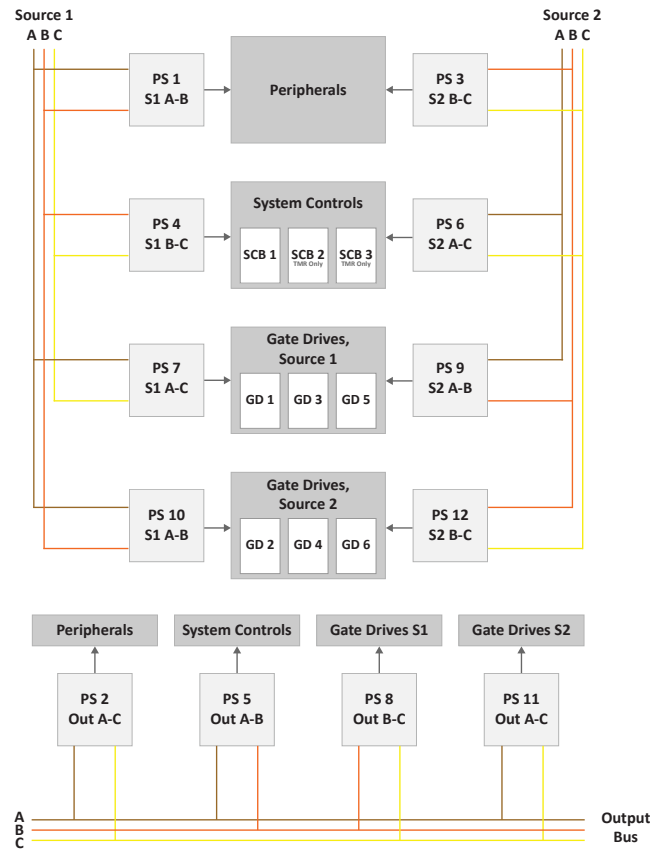
Divided into four (4) logical failure groups:

- System controls
- Source 1 gate drives
- Source 2 gate drives
- Peripherals.

The three (3) available source of power from which to supply control power to each failure group are:

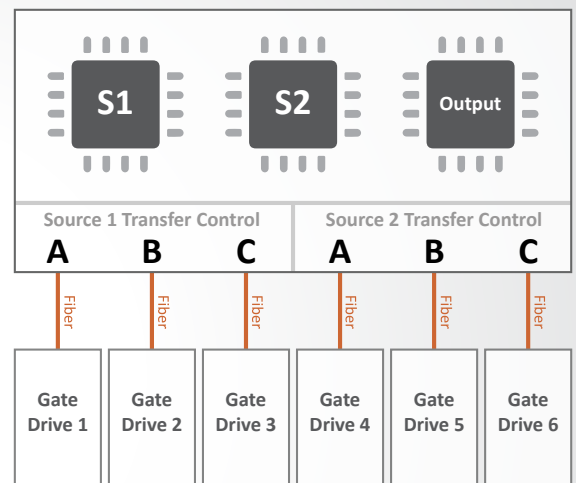
- Source 1
- Source 2
- STS Output.

LayerZero’s STS design incorporates twelve (12) power supplies (3 power sources x 4 failure groups.) The resultant control power topology utilizes all possible power paths to the four logical STS failure groups; and is the most comprehensive and redundant power supply system in existence.



eSTS SMR Triple Redundant Processors

- Separate/independent processors for Source 1, Source 2 and Output power quality analysis
- If Source 1 processor malfunctions then system is able to be commanded to transfer to Source 2; & vice versa.
- If main control system fails then STS continues to conduct power to the load from the existing source of power. (However STS is unable to transfer to the other source)
- Each phase of each source is controlled with a separate gate drive circuit board.



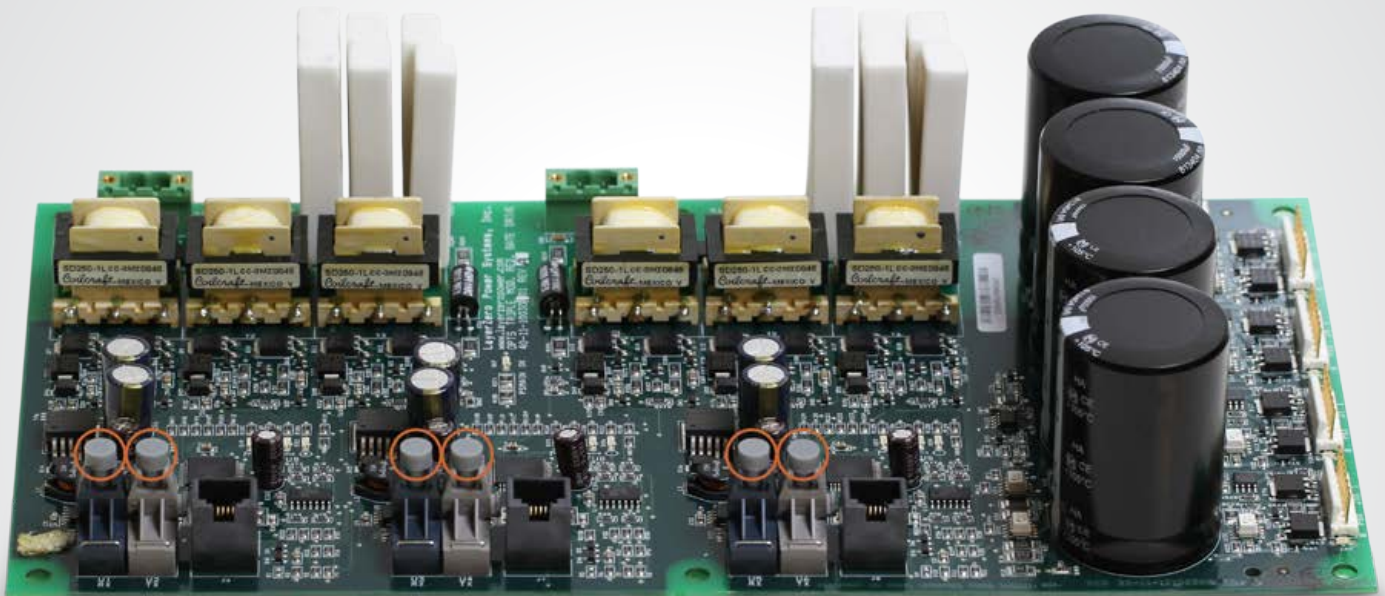
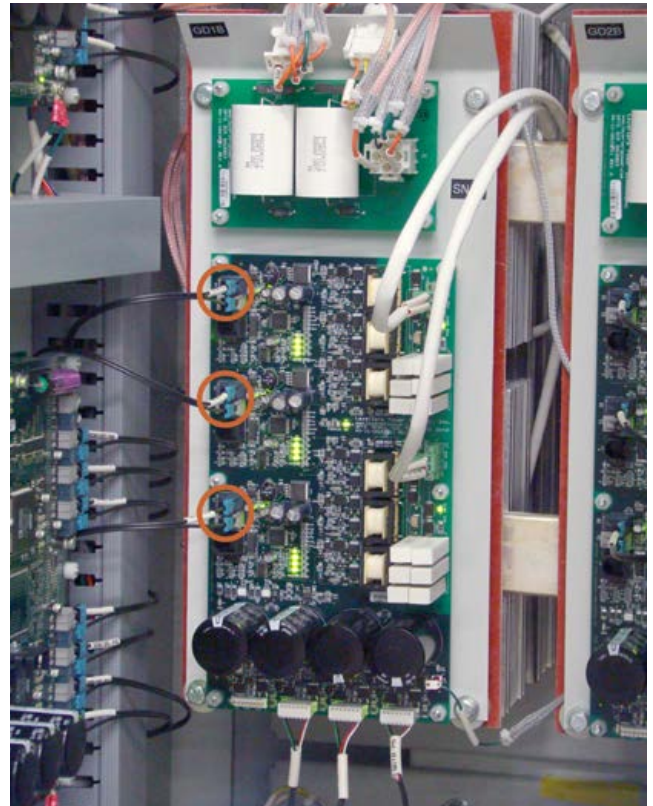
Reliability Features

Fiber Optic Controls Increase System Reliability

Fiber optic based controls eliminate noise and interference, while isolating components from high voltage.

Optical fiber allows service to be reliably connected, while protecting the equipment.

In LayerZero's ePODs: Type-P design, the gate drives (at Power Circuit Voltage) receive control signals via optical fibers.



Reliability Features

No Fans, Dust Filters, or Fan Fuses

Fans and fan sensors are one of the most common components to fail. For maximum uptime, Type-P systems do not contain any fans, dust filters to change, or fan fuses to replace. The Series 70 ePODs: Type-P utilizes a natural convection-cooled heat dissipation system.

The heat sink arrangement is staggered between sources and phases to minimize the creation of extreme thermal gradients between heat sink columns when conducting on one source or the other.



Epoxy Coated Buswork

Our usage of epoxy coated buswork helps ensure safety, and makes the system inherently more reliable by eliminating the possibility of bus-to-bus faults.

Silver Plating

LayerZero utilizes silver plating on all bus joints and terminals to be able to provide the highest performance. Silver has high conductivity and low resistance - which makes for a great contact.



Reliability Features

Mechanical Bypass Interlock

In order to minimize the possibility of operator error during equipment bypass operations, LayerZero provides:

1. Interlocked breakers
2. Mechanisms to ensure that a source cannot be bypassed without the STS on the correct source.
3. Safeguards to make certain that sources cannot be connected to each other inadvertently.
4. A voice-prompted bypass procedure that guides the operator through the sequence.
5. A step-wise pictorial & video presentation is provided on the touch-screen display during bypass.



Voice Guided Bypass

Operator error during maintenance bypass has been known to be a reliability hazard. To help prevent operators from completing the bypass procedure out-of-sequence, our product features a voice prompted bypass procedure. This instructs the operator in a step-by-step course of action of the process, with only one operation per screen.

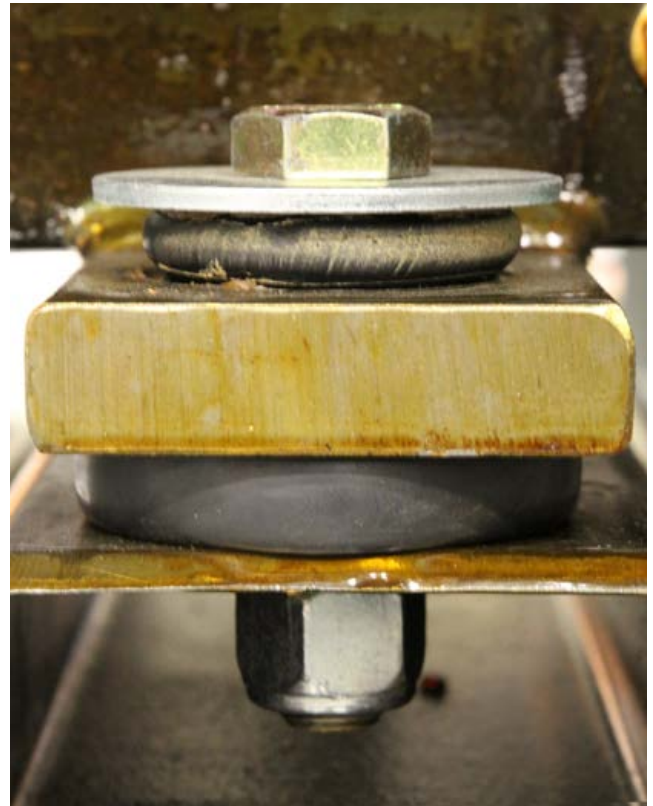
Visual and audio cues provide clear instructions on the bypassing sequence, reducing the probability of operator error.



Ease of Maintenance

Vibration Isolation Damper Mounts

Transformers in the Series 70: ePODs Type-P Power Distribution Unit are equipped with vibration isolation damper mounts, helping to reduce the amount of vibration and noise that originates from transformers, ultimately leading to a higher reliability of electrical and mechanical connections over the life of the product.



Sectionalization Maximizes Operator Safety

Operators are well-protected from exposed connections. Normal operator sections (breakers/switches) are physically separated from the power electronics and control electronics sections, so that maintenance on a section can be safely performed. If maintenance is required on a particular section, power can be bypassed to another section to allow for safe repairs to be made.



Ease of Maintenance

InSight™ IR Portholes Permit Scanning of Bolted Connections with Dead-Front Doors Closed

Strategically positioned IR-scan portholes to enable safe thermal scanning of all bolted connections with the deadfront closed, without exposing the operator to power circuit voltage. Thermal scans can be done from the front – without ever having to open the dead-front door.

The IR window swivels upward and unlocks with key-hole access to reveal a mesh, allowing the operator to point-and-shoot thermal cameras to obtain readings.



Elevated Transformer Mounting:

1. Eliminates parasitic plenum airflow
2. 4" rear clearance required

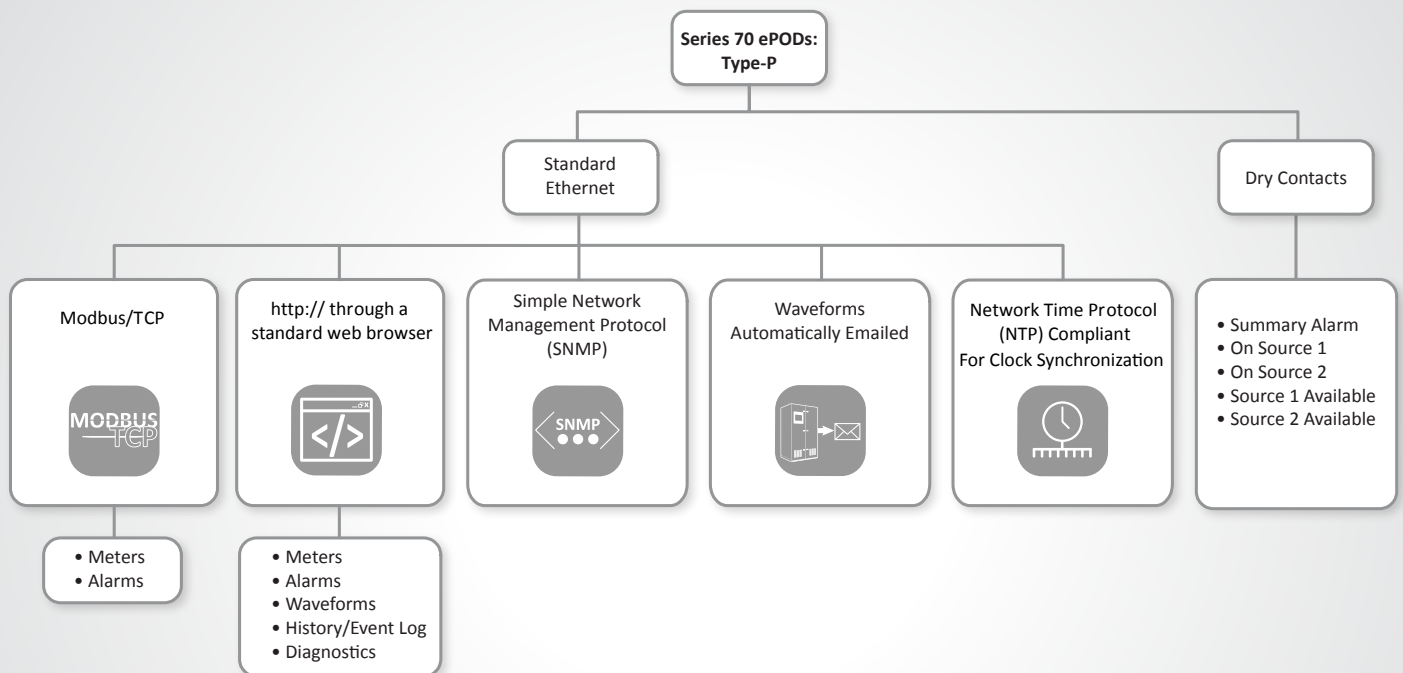


Ease of Maintenance/Connectivity Options

View Status LEDs and Distribution CB Positions With Dead-Front Doors Closed

Our Series 70 product line was inspired by NFPA-70E, to help critical facilities drastically reduce the risks of their energy distribution systems.

Operators can view the status of diagnostic LEDs without exposure to the energized power electronics section. In addition, SafePanel circuit breaker positions can be viewed with the dead-front door closed.



Safety Features

The LayerZero Finger-Safe SafePanel™

The Series 70 ePODs: Type-P features an IP-20, finger-safe panel board, meaning that the opening will not allow ingress of ½” (12.5mm) diameter probe, for maximum operator safety.

An arc can form as two live conductors are separated – such as the removal of a circuit breaker from a panel board. The SafePanel design ensures that a potential arc would be contained in the connection well so that even if a branch breaker were to be removed, the arc would be contained in the connection well.

Insulated with the components deeply isolated, removal of the breaker is safe and easy.



The Protective Cover Is Removed



The Breaker Is Inserted Into The Opening



The Breaker Snaps Into The DIN Rail



The Breaker Is Secured With An Isolated, Non Conducting Screw

Safety Features

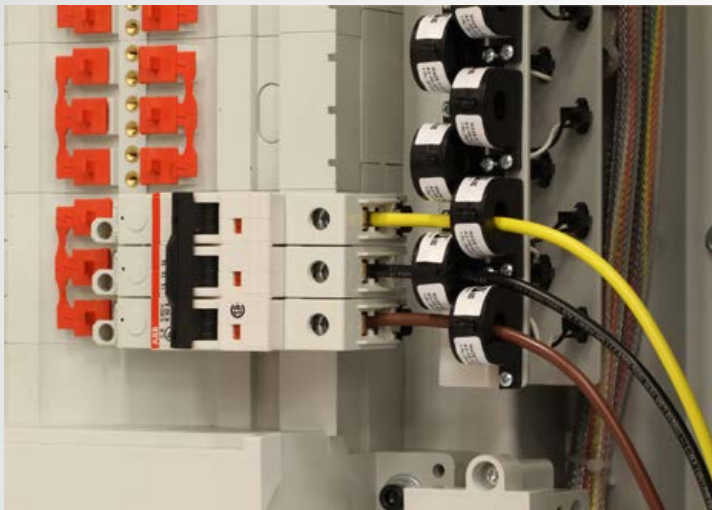
Circuit Breaker Shrouds

LayerZero Series 70 ePODs: Type-P configured with 42-circuit panel boards provide optional circuit breaker shrouds, designed to eliminate exposure to live parts.

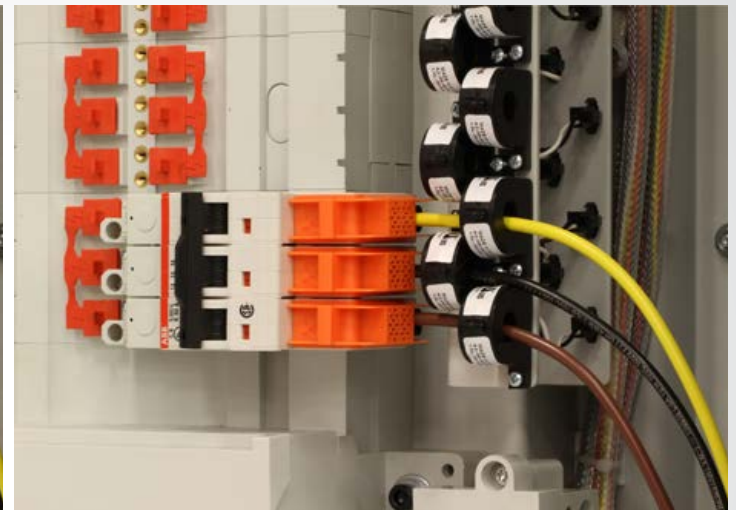


No Exposed Live Parts

LayerZero's patent-pending Circuit Breaker Shrouds cover exposed wiring, maximizing operator safety.



Wiring Without Shrouds Leaves Wiring Exposed



Circuit Breaker Shrouds Maximize Operator Safety

Safety Features

The LayerZero SafePanel™

The Series 70 ePODs: Type-P features an IP-20, finger-safe panel board, meaning that the opening will not allow ingress of ½” (12.5mm) diameter probe, for maximum operator safety.

An arc can form as two live conductors are separated – such as the removal of a circuit breaker from a panel board. The SafePanel design ensures that a potential arc would be contained in the connection well so that even if a branch breaker were to be removed, the arc would be contained in the connection well.

Insulated with the components deeply isolated, removal of the breaker is safe and easy.



Type-P 1200 A Circuit Breaker Installation Process



The Breaker Is Inserted Into The SafePanel



The Handle Is Unlocked



Screws Help Secure The Breaker



For Maximum Safety, The SafePanel Has Recessed Bus Work and Finger Safe Lattice.

Power Quality Monitoring

zen SSQM

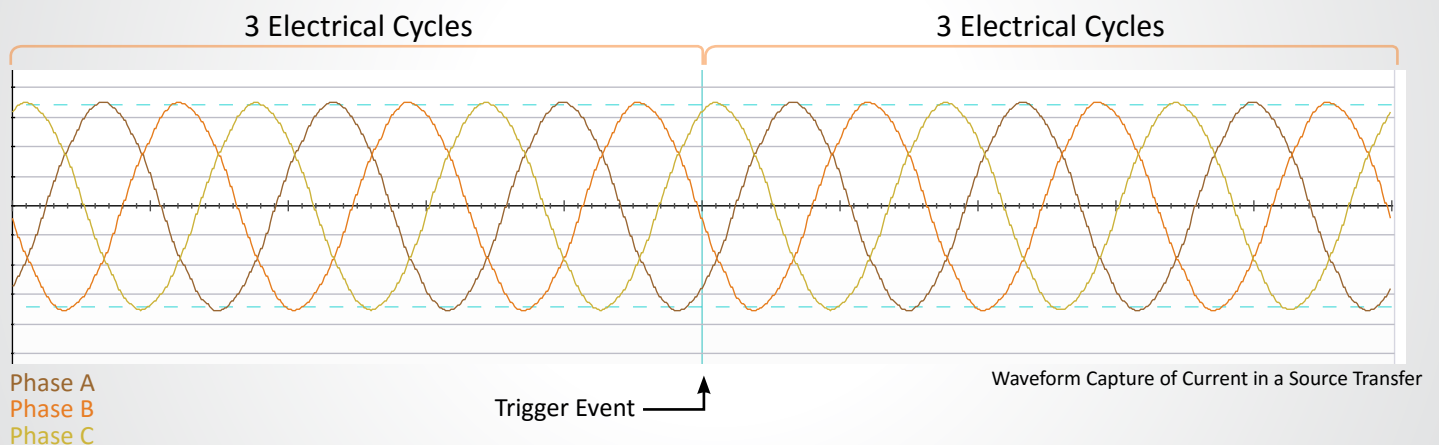
The Series 70 ePODs: Type-P is equipped with Zen SSQM (Static Switch Quality Monitoring), an all encompassing monitoring system with local and remote communications options.

From basic monitoring & alarm reporting, to advanced power quality monitoring functionality, Zen SSQM provides a wide-range of options to help you be aware, be vigilant, be proactive in your quest to create a safe, stable and reliable operation.

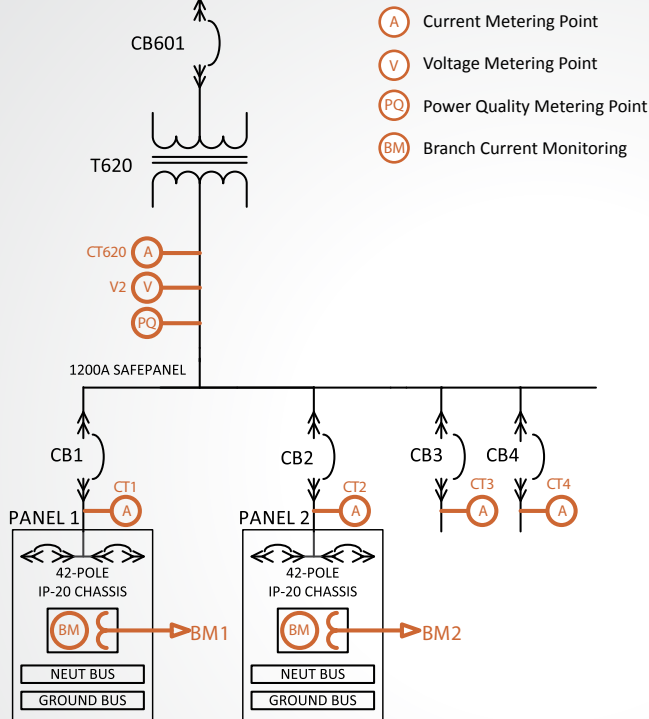
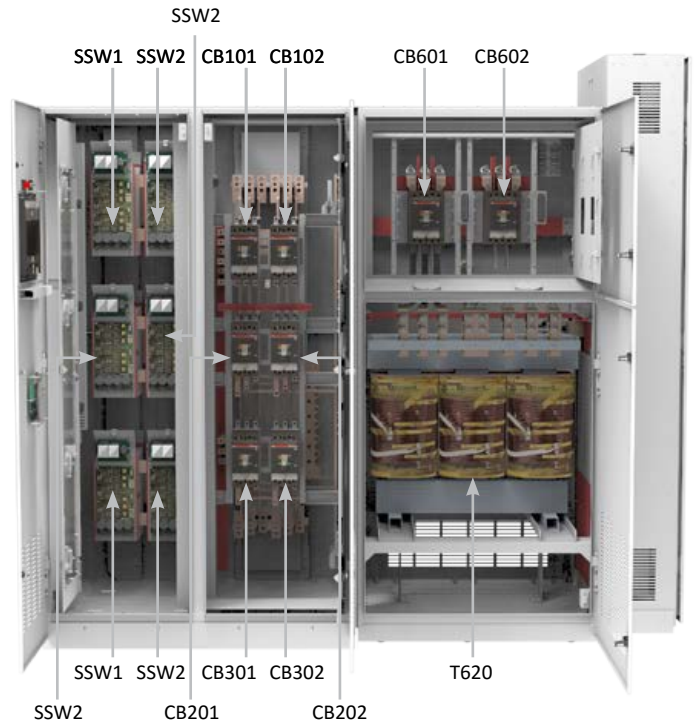
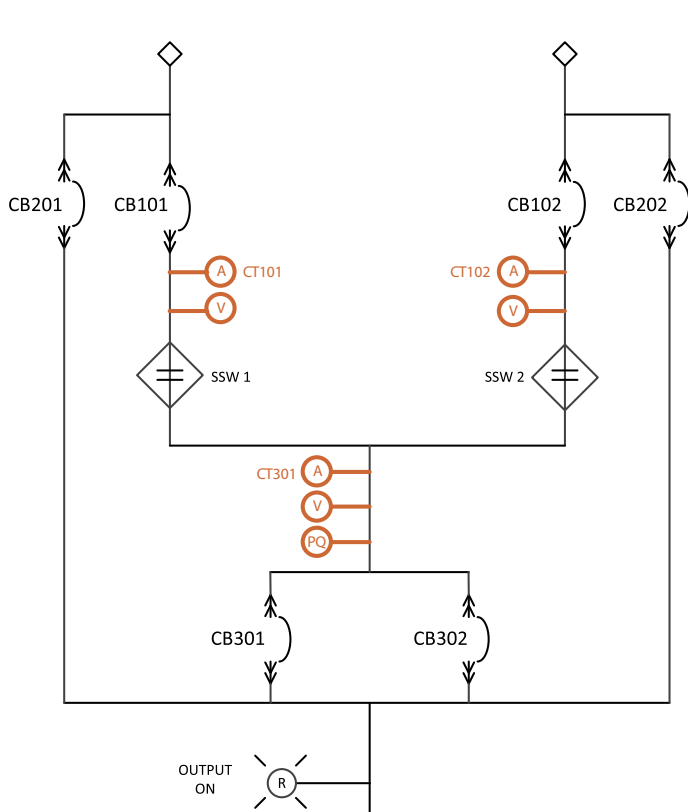


Zen SSQM Provides Answers

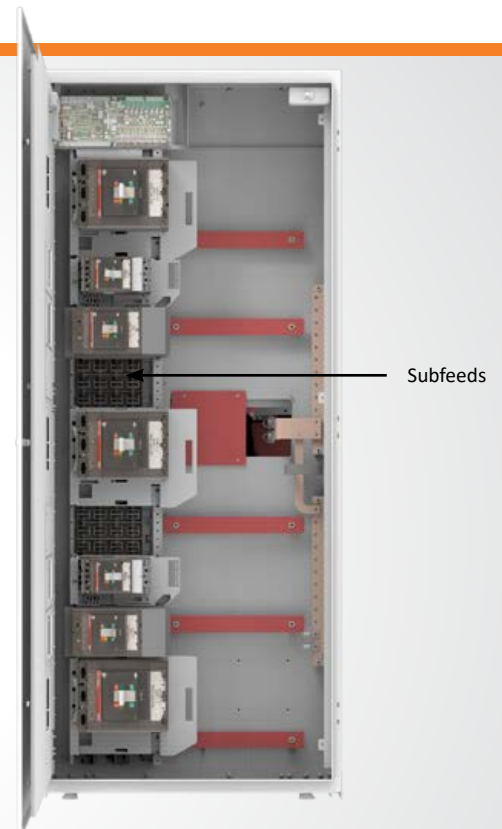
Zen SSQM provides timestamped pictures of waveforms before and after events, providing information that enables facilities to go back in time to methodically identify and correct the root causes of events. Zen actively captures power quality information at the STS, PDU, and RPP - permitting thorough post-event analysis.



Power Quality Monitoring



- (A) Current Metering Point
- (V) Voltage Metering Point
- (PQ) Power Quality Metering Point
- (BM) Branch Current Monitoring



Technical Specifications



Zen SSQM Parameters		Mains	Subfeeds or Branch Circuits
Voltage Inputs and Output	Voltage	✓	
	Frequency (Hertz)	✓	
	Phase Rotation	✓	
Current Inputs	Current (Amps)	✓	✓
	Current Fraction of Rating (Percent)	✓	✓
	Current Imbalance (Percent)	✓	✓
	Real Power (kilowatts)	✓	✓
	Apparent Power (kilovolt-amperes)	✓	✓
	Reactive Power (kilovolt-amperes reactive)	✓	✓
	Power Factor	✓	✓
	K Factor	✓	✓
	Crest Factor	✓	
Alarms	Summary Alarm	✓	
	Voltage (High, Low)	✓	
	Overload	✓	
	Thermostat (High, Low)	✓	
	THD Over Limit	✓	
	Frequency (Over, Under)	✓	
	I A/B/C K-Factor Over Limit	✓	
	Average K-Factor Over Limit	✓	
	Incorrect Phase Rotation	✓	
	Voltage Failure	✓	
	I G1/G2 Over Ground Fault Limit	✓	
	I G1/G2 Over Ground Overcurrent Limit	✓	✓
	TVSS 1/2/3/4 Failure	✓	

All product specifications are subject to change without notice.

Technical Specifications

ePODs: Type-P Models with Withstand Ratings				
	208 V @ 240 V	480 V	575 V	600 V
225 A	65 kAIC; 50 kAIC	35kAIC; 25kAIC	10kAIC	
250 A	200 kAIC; 150 kAIC; 100 kAIC; 65 kAIC	150kAIC; 100kAIC; 65kAIC; 35kAIC; 25kAIC;	100kAIC; 65kAIC; 35kAIC; 25kAIC; 18kAIC	
400 A	200 kAIC; 150 kAIC; 100 kAIC; 65 kAIC			
600 A	200 kAIC; 100 kAIC; 65 kAIC			
800 A		100kAIC; 65kAIC; 50kAIC; 35kAIC	42kAIC; 35kAIC; 25kAIC; 20kAIC	

Mechanical Characteristics							
	75kVA	150kVA	225kVA	300kVA	400kVA	500kVA	600kVA
Dimensions (side facing distribution) :	96"W x 88"H x 36"D (2438 mm x 2235 mm x 914 mm)				108"W x 88"H x 36"D (2743 mm x 2235 mm x 914 mm)	125"W x 88" H x 36" D (3175 mm x 2235 mm x 914 mm)	
Dimensions (front facing distribution) :	120"W x 88"H x 36"D (3048 mm x 2235 mm x 914 mm)				132"W x 88"H x 36"D (3353 mm x 2235 mm x 914 mm)	145"W x 88" H x 36" D (3683 mm x 2235 mm x 914 mm)	
Weight:	2000 - 3000 lbs (907 kg - 1361 kg) Varies on Configuration, Please Contact LayerZero Engineering						
Heat Dissipation:	Varies on Transformer Efficiency, Please Contact LayerZero Engineering.						
Frame Construction	Welded Frame						
Electrical Connections	Flexible Laminated Bus, Silver-Plated Solid Busbar						
Color	Textured Powder Coat White (RAL 7035), Blue (RAL 5017), Black, Custom						
Seismic Floor Anchors	Optional						
Seismic Floor Stand	Optional						
Sectionalization	Engineered Composite Insulation, Dead Front Doors						

Electrical Characteristics	
Static Transfer Switch	
Number of Inputs	2, 3
eSTS Number of Output CBs	1, 2
Frequency	50 Hz, 60 Hz
Poles	3-pole, 4-pole
Phases	3 Phase, 3 Wire, 4 Wire + Ground
Neutral Rating	100%, 150%, 200%
eSTS Transfer Time	Nominal 1/4- cycle for in-phase sources
eSTS Redundancy	Single Module Redundancy, Triple Modular Redundancy (Optional)
eSTS Circuit Breaker Type	Molded Case Switch (Standard), Electronic Trip (Optional)
Circuit Breaker Mounting Type	Plug-In up through 600 A; Draw-out 800 A, 1200 A
eSTS TVSS	Standard
EPO	Optional
Subfeed Distribution	
Distribution	SafePanel™ Distribution

All product specifications are subject to change without notice.

Technical Specifications

Power Quality Monitoring	
Power Quality Monitoring Technology	Zen SSQM™ (Static Switch Quality Monitoring)
Waveform Capture	Local Display, Remote Display via Web Browser, Waveforms Automatically Emailed
Voltmeter	Input sources and Output, for each phase
Ammeter	Input sources and Output, for each phase
Frequency Meter	Both Sources
Real-Time Synchroscope	Phase Angle Meter Between Sources
Metering	Apparent Power, Real Power, Power Factor, Output Total Harmonic Distortion
Time Stamped Transfer Count	From First Day Use, From Last Reset
CB Status Indicator	Open/Closed/Tripped Circuit Breaker
Source Indicator	Preferred Source
Phase Indicator	When Any Two Sources Are Within Window
Power Path Indicator	On Live Mimic
Operational Characteristics	
Transfer Modes	Automatic; Manual (via Preferred Source Selection)
Inrush Mitigation Technology	Patented Dynamic Phase Compensation Algorithm (U.S. Patent 7,589,438 B2)
Cooling	Convection Cooling
Cable Access	Top/Bottom
Service Access	Front Only
Bypass Interlock Mechanism	Mechanical
Noise & Interference Isolation	Optical Fiber in Critical Control Paths
IR Scan Port Type	InSight™ IR Portholes
SCR Type	Puck
Display Type	15" Color Touch Screen
Display Resolution	1024x768
Bypass Assistance	Voice-Guided Bypass
Audio	Bezel-Mounted Stereo Speakers
Languages	English, French
Mimic Panel	Digital
Setpoints Control	Digital
Power Supplies	Redundant (4 Failure Groups. Triple Redundant Supplies. 12 Power Supplies Provided.)
Standards Conformance: Static Transfer Switch	
UL	ETL Listed to UL 1008S
CSA	ETL Listed to C22.22 No 107.
Standards Conformance: SafePanel Distribution	
UL	ETL Listed to UL 60950
CSA	C22.2 No 29-M1989

Notes:

- 1) Depth dimensions are valid for Sub-feed distribution. For panel board distribution, depth is 48".
- 2) Add 12" to width and Left side access for (5) or (6) 42-circuit panel boards
- 3) Rear access not required for installation; operation; and maintenance

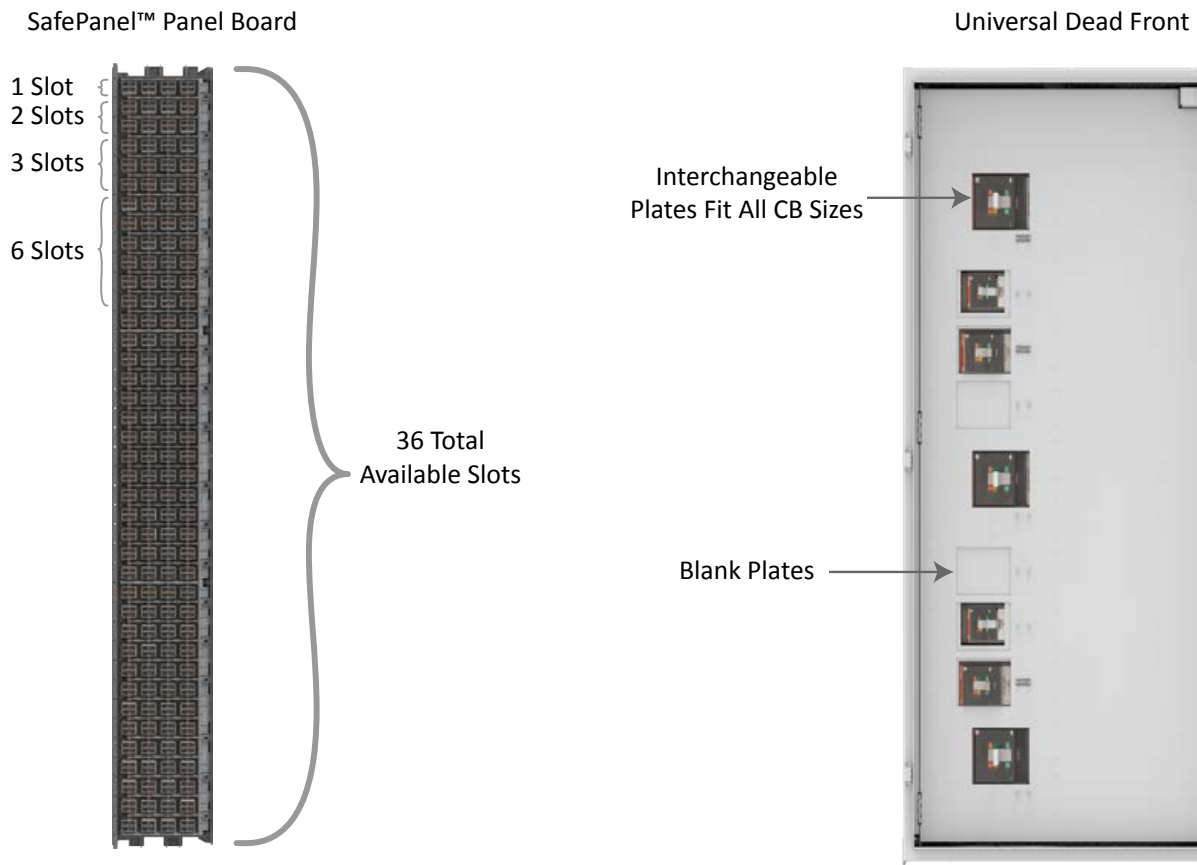
Contact LayerZero for custom sizes and designs.

All product specifications are subject to change without notice.

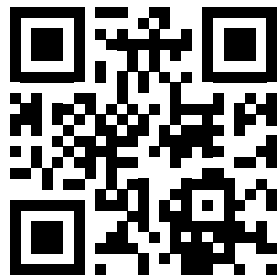
Technical Specifications

Connectivity	
Meters	Local Display, Ethernet, Modbus/TCP, http via Web Browser (Non-Proprietary)
Alarms	Local Display, Ethernet, Modbus/TCP, http via Web Browser (Non-Proprietary)
Summary Alarm	Dry Contacts
Waveforms	Local Display, Ethernet, http via Web Browser (Non-Proprietary)
History/Event Log	Local Display, Ethernet, http via Web Browser (Non-Proprietary)
Diagnostics	Local Display, Ethernet, http via Web Browser (Non-Proprietary)
Time Synchronization	Network Time Protocol (NTP)

Number of Output Circuit Breakers	
Number of Available SafePanel™ Slots	36
CB Rating	Number of Slots Required
100 AF	2
250 AF	3
400 AF	3
400 AF 100%	6
800 AF	6



All product specifications are subject to change without notice.



Learn more at www.LayerZero.com



LayerZero Power Systems, Inc.
1500 Danner Drive
Aurora, OH 44202 U.S.A.

© 2016 LayerZero Power Systems, Inc.

LayerZero Power Systems, LayerZero.com and the LayerZero logo are registered trademark of LayerZero.
All product specifications are subject to change without notice.

Rev. 7/16 #16